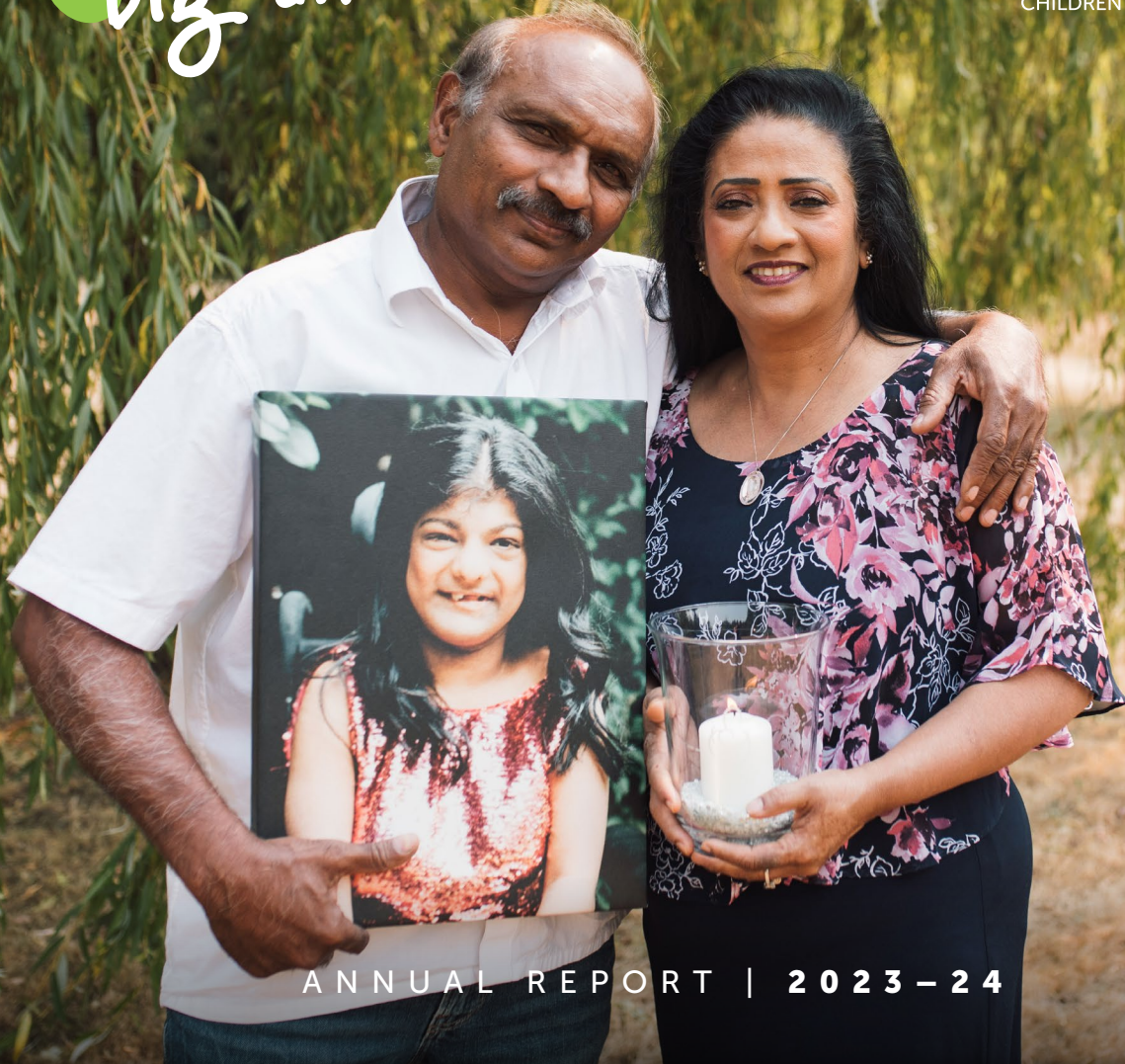




Thank you from our
big and little hearts



Canuck
Place
CHILDREN'S HOSPICE



ANNUAL REPORT | 2023 - 24



We are deeply grateful
for the continued
generosity of our
donors. With your
unwavering support,
lives are transformed.

Canuck Place Children's Hospice acknowledges with gratitude that our work takes place on the traditional and unceded lands of the Coast Salish Peoples, including the territories of the ṣxʷməθkʷəy̓əməʔt təməxʷ (Musqueam), Skwxwú7mesh-ulh Temíxw (Squamish), səliiwətaʔt təməxʷ (Tsleil-Waututh) Nations, Stó:lō (Stolo) people, the Semá:th (Sumas) and Mathxwí (Matsqui) First Nations. Our program spans the province of BC and occupies the lands and territories of BC's Indigenous peoples.



Live
every day
like it's
your first



“Once the Canuck Place team stepped in, the entire experience of Ethan’s last few days alive changed for us and brought meaning to his life. This organization is an essential part of making you feel human as you deal with one of the most difficult parts of life.”

—Rebecca and Derek
Van Oosterom,
Canuck Place Parents

Patient-Family Partners



ANGELA UNCLES
FAC Chair

As I complete my term as Chair of the Family Advisory Council (FAC), I want to share my gratitude with the donors who make care possible for my family. Because of your investment, my husband and my two daughters, Hazel and Lumina have the care and support of Canuck Place. My daughter Lumina, needs this support as she lives with a complex illness, and as she gets older, we as a family are increasingly facing struggles with day-to-day living. I

took this role to help families like mine so they get the care they need now and in the future.

The FAC has membership from families who have children on program and also includes bereaved families. These parents, siblings, and caregivers have valuable living experience caring for a child with a life-threatening illness and bring robust perspectives of their unique journey with their child. The FAC offers guidance to Canuck Place to improve best practices including the quality and safety of care, the development of new policies and services, and enhancing the experiences of all families at Canuck Place. Additionally, the FAC plays a key role in governance through advising the Canuck Place Board of Directors on a selection of a family member for a designated board seat.

Thank you to our donor community for making this comprehensive care possible. From my family and all the FAC members, thank you for supporting our voices in the care of our children.

FAMILY ADVISORY COUNCIL

The Family Advisory Council regularly reviews and informs Canuck Place policies. Canuck Place responds to the voices of our patient families and collaborates on improving care by working directly with families in real time. We are grateful for the guidance and lived experience of the FAC members.

Angela Uncles
(Chair)

Teresa Domingo
(Secretary)

Meagan Colenutt

Kerena Letcher

Riki Lawson

Barbra Mohan
(CPCH Board Representative)

Chris and Hollie Hall

Marion Fernandez

Pooja Dixit

Joe Goodings

Huamei Kang

Grace Hobby

Working Together



DENISE PRAILL
Chief Executive
Officer

With your generosity, the pediatric palliative program delivered by Canuck Place provides children with life-threatening illnesses and their families exceptional care in BC and the Yukon. The support of donors, corporate, and government partners is vital to providing quality of life for children and families.

Diagnosis for a child and family is incredibly difficult, and the burden of disease or condition can have a profound impact. On average, a child is on our program for six years and their families for a further three years in grief and bereavement care. With you, we give seriously-ill children a chance to live life to the fullest with the time they have remaining.

We feel the difference our donors make every day. Your donations help Canuck Place care for terminally-ill children, as well as supporting their families through the toughest of times.

Thank you for walking with children and families as they face unimaginable circumstances.



**SUZANNE
STEENBURGH,**
Board Chair

CANUCK PLACE
PROUDLY SHARES YOUR
INCREDIBLE IMPACT

920

**CHILDREN AND FAMILIES
ON PROGRAM**

6% increase

4,013

**COMMUNITY-BASED
CARE CONSULTATIONS**

including 24-hour Clinical Care Line,
in-hospital, in-home and virtual care

1,407

FAMILY SUITE NIGHTS

for 3,543 family members in our
family room accommodations at our
hospices, a 23% increase

**A PATIENT-FAMILY
ENGAGEMENT FRAMEWORK**

that supports partnership
with families who have lived/living
experiences and improving
care and services provided
by CPCH



Commitment to Partnership in Care



Dr. HAL SIDEN,
MD, MHSc, FRCP
Medical Director

The goal of the Canuck Place program is to optimize living and reduce suffering for infants, children and youth aged 0–19 years and their families.

At Canuck Place, we care for the whole human being and we value collaboration and partnership with children and families. Our clinical team views this important relationship as a powerful instrument of healing in the face of pain and uncertainty.



KRISTINA BOYER,
RN, MScA
Director, Clinical
Program

With your support, our nurses, physicians, counsellors, and recreation therapists deliver exceptional care. We share our gratitude with your for joining our goal to reach every family caring for a child with a life-threatening illness who needs help in BC and the Yukon - so no one walks this journey alone.



100%

**OF URGENT HOSPICE
ADMISSIONS**

occurring within 24 hours of
identified need

7%

**INCREASE IN INPATIENT BED
OCCUPANCY**

ensuring families received care
in our hospices when they
needed it

3,143

COUNSELLING SESSIONS

provided for children and
families to support mental health
through incredible challenging
circumstances

28%

**INCREASE IN RECREATION
THERAPY SESSIONS**

for over 3,165 child and family
attendees

40

CLINICAL TRAINEES

including medical residents, fellows,
student nurses - this fulfills CPCH
mandate to share pediatric
palliative care knowledge

Pediatric Palliative Care Research



Dr. HAL SIDEN,
MD, MHSc, FRCP,
Scientific Director,
CPCH Research
Initiative

Pediatric Palliative Care (PPC) care differs from adult care, with different conditions, care, and trajectory. That makes the research for children different.

The Canuck Place Research Initiative (CPCH RI) focuses on longitudinal studies of children with life-threatening illnesses, epidemiological studies of children with these conditions, and outcomes of care. It also looks at how pain and symptoms are assessed and managed, how families are impacted by their child's health condition, and how non-verbal children with neurological impairment experience care. The CPCH RI is also part of a national, interdisciplinary network of clinicians and researchers.

As a global leader in PPC, the CPCH RI is positioned to provide leadership in generating new knowledge and mobilizing it with clinicians and researchers to benefit the children and families confronted with fragility, uncertainty, grief, and loss.

TOGETHER, WE ACHIEVED
THE FOLLOWING IMPACTS

80

KNOWLEDGE TRANSLATION PRESENTATIONS

by CPCH clinical staff to provincial, national, and global audiences fulfilling CPCH mandate to share knowledge for the benefit of seriously-ill children everywhere

17

RESEARCH PUBLICATIONS

in partnership
with CPCH clinicians


HIRING OF FAMILY-PATIENT PARTNER AND RESEARCHER

Laesa Kim

ESTABLISHING A SCIENTIFIC ADVISORY COUNCIL

for the CPCH Research Initiative





Thank you for investing
in essential pediatric
palliative care programs
delivered by Canuck
Place to children
and families in need.

Canuck Place Family Journey[®]



When children with life-threatening illnesses and their families come to CPCH, the end of the story is already known, but the journey to get there has yet to be written. With your support, we ensure the rest of that story is the very best it can be.

The Journey Begins: Diagnosis

This journey is one of many. Langley family, the Garrisons: Parents Daniel and Miranda, sibling Gavin (5) and child Tiffany (1) diagnosed with life-threatening illness

Referral to Canuck Place Children's Hospice

In-hospital, and outpatient family consult by Canuck Place clinical team

Inpatient Care

24-Hour Canuck Place clinicians care for over 240 diseases and conditions

Family Counselling

Play therapy, music therapy, and counselling

Urgent Inpatient Admission

Memory-Making Program

Two Provincial Hospices



BC and the Yukon's pediatric palliative care provider to over 920 children and families. Two hospice locations: Vancouver and Abbotsford

Family Team Meeting



Family Needs Assessment and Community Support Plan

24-Hour Inpatient Medical Respite



Tiffany (4) Gavin (8)

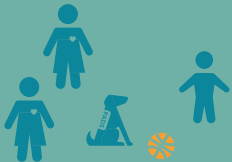
Recreation therapy, counselling, education, and specialized medical care for Tiffany (4)

Recreation Therapy/Camps



Opportunities for family adventures

Family Volunteer Care



Gavin (10) plays with Canuck Place volunteers

Goes Home



Miranda and Daniel are primary caregivers at home

Canuck Place Care at Home



Canuck Place Nurse home visit

Increased Symptoms at Home



Tiffany (7)

Province-wide 24-Hour Clinical Care Line

End-of-Life Care In-home or In-hospice



Spiritual Care



Psychosocial Care



Gavin (12)

One-on-one counselling, bereavement groups for parents, siblings, and grandparents

The Journey of Life Continues



Compassionate community: always a part of the Canuck Place family



Hernandez family with Karin Roberts, Canuck Place Music Therapist

Medical Respite Care Helps Parents Just Be Parents

Diana and Cesar Hernandez's son Emi, has a rare condition called Kernicterus, that impacts his motor and sensory functions, requiring 24/7 care. Canuck Place supports the Hernandez family through medical respite care, a program that allows the family to receive much needed rest and renewal, while Emi receives expert medical care.

While at Canuck Place, Emi and his family enjoy going on recreation therapy outings, spending time in the music and art room, and participating in creative activities as a family.

"The first time we stayed at Canuck Place, Kelly was Emi's Care Aid during the night," Diana explains. "We were worried about Emi sleeping in a different room because he has separation

anxiety and has always been afraid of new places and people. Emi trusted Kelly from the very first moment. Kelly held him in his strong arms and spoke to him in his tender voice and Emi felt safe and loved. For the first time in six years, someone other than family members cared for our son with love and tenderness."

Canuck Place supports parents like Diana and Cesar to cherish every single moment with their child. "Being part of Canuck Place has forever changed our family's life," Diana explains. "We feel like we have a second home and a second family. We feel supported and safe."

+23%

**INCREASE IN FAMILY
MEMBERS STAYING
IN OUR HOSPICES
FOR MEDICAL
RESPITE CARE**



Marie and Wes Toews, Canuck Place Parents

Canuck Place Care is a Beacon of Light and Lasting Memories

Marie and Wes Toews received the heartbreaking news that their daughter Sophia had been diagnosed with Trisomy 18, during Marie's pregnancy.

The uncertainty of the diagnosis was difficult for the Toews. However, their introduction to Canuck Place Nurse Practitioner, Camara van Breemen, provided a much-needed care plan that reflected Sophia's diagnosis and the family's values.

Marie and Wes focused on living life to the fullest with the time they had left with Sophia.

"When we first got Sophia's diagnosis, the weight of responsibility to navigate that on our own, was a lot," explains Wes. "What we quickly came to know is that the support of Canuck Place allowed us to be present during

our experience and to care for ourselves and our daughter, rather than feeling the enormity of her care or decision-making alone."

Canuck Place counsellors provided grief and bereavement support and recreation therapists supported the Toews family to create meaningful moments and memories by making foot molds and a pendant with Sophia's footprint.

Canuck Place remains a lifeline for families like the Toews, navigating medical complexities, offering comprehensive care and support from diagnosis and beyond. By providing compassionate care tailored to each family's unique needs, Canuck Place ensures no family walks this challenging journey alone.



INCREASE IN
End-of-Life care



Hannah and Angelina Premia, Canuck Place Family (Cover Story)

Canuck Place Offers Families Choices

For families at Canuck Place, having choices is important. Sam and Helen Premia's daughter, Angelina, was diagnosed in utero with Oral Facial Digital Syndrome — Type 1, a severe neurodevelopmental genetic condition. Despite this life-limiting diagnosis, Angelina lived a spirited and loving life, communicating joy and affection even non-verbally. At 18, Angelina faced chronic kidney failure linked to her condition, leading the Premias to seek compassionate comfort care at Canuck Place.

For the Premias, honouring Angelina's wish to stay at home during her final days was paramount. Canuck Place staff, including Nurse Practitioners Rachel Neufeld and Camara van Breemen, provided comprehensive in-home support, managing pain and symptoms, and overall comfort.

They also facilitated memory-making activities such as professional photos, hand molds, and pendant necklaces with Angelina's fingerprint, creating cherished mementos for the family.

After Angelina's passing, the Premias continue to receive bereavement support from Canuck Place. This support helps the Premias navigate their profound loss, offering comfort and strength during difficult times.

With you, Canuck Place families can choose where they wish to receive care, offering comfort in uncertainty, grief, and loss.



4,013

COMMUNITY-BASED CARE CONSULTATIONS

which includes 24-Hour Clinical Care Line, in-hospital, in-home, and virtual care



Grewal Family kayaking in Kelowna during Summer in the City

Let the Joy and Adventure In!

Every year with your support, our recreation therapy team brings joy and adventure to Canuck Place families with the Summer in the City program. It is a way for families to try new and exciting things and create lasting memories through various activities across BC.

Our recreation therapy team adapts activities to meet the unique needs of each child, ensuring accessibility and inclusion. From kayaking to helicopter rides, each event is carefully planned to provide safe, enjoyable, and memorable experiences. These activities not only provide joy and entertainment, but also help children develop new skills, build confidence, and foster a sense of accomplishment.

Summer in the City is unique as the activities are inclusive of siblings and parents. The program also helps nurture community among families, allowing them to connect, support one another, and share their journeys. Summer in the City represents Canuck Place’s commitment to holistic care, proving that with creativity and dedication, every child can experience the joy of summer.



RECREATION THERAPY SESSIONS

for 3,165 children and family attendees

“Everyone deserves recreation. It is fundamentally designed to get people out and to connect with their community.”

—Chris Skibington, Canuck Place Dad

Family Engagement Framework

With your support, Canuck Place formed a project group called the Family Engagement Coalition (FEC), comprised of staff, external healthcare experts, and family partners. This amazing team co-developed an evidence-based framework and tools to ensure meaningful engagement with children, youth, and families at Canuck Place.

The framework is important as it provides the structure for consistent, safe, and respectful engagement with all children and families. Canuck Place is focused on representing the diverse perspectives of patient-partner families and to informing improvement of care and services at Canuck Place.

We are grateful to donors supporting the future of collaborative care!



**ENGAGING WITH PURPOSE
AT CANUCK PLACE CHILDREN'S
HOSPICE**

Fostering Inclusion and Global Impact in Pediatric Palliative Care

Canuck Place is an award-winning organization committed to fostering diversity, inclusion, equity, and belonging. We have received numerous acknowledgements, including the 2023 Children’s Healthcare Canada Organizational Leadership Award and the 2023 SupportingLines High-Performance Culture Award.

Canuck Place recently partnered with Two Worlds Cancer Collaboration to support pediatric palliative care globally. To meet the growing need for healthcare for children with a serious illness, Canuck Place clinicians are participating in the Children’s Palliative Care Leadership Institute, a one year program aiming to develop the next generation of healthcare leaders, educators, and clinicians globally.

Additionally, Canuck Place serves as a hub for international pediatric hospices, sharing best practices and modelling pediatric palliative care. Notable collaborations include those with hospitals/hospices in Costa Rica, Kuwait, Australia, South Africa, Romania, the Netherlands, Russia, Mexico, the UK, and the US. With your support, Canuck Place remains dedicated to compassionate care locally, nationally, and internationally.

AWARDS AND RECOGNITION

-  2023 **WORK WELLNESS INSTITUTE IN ACTION AWARD** Winner
-  2023 **5-STAR DIVERSITY EQUITY AND INCLUSION EMPLOYER**, Canadian HR Reporter
-  2023 **INNOVATIVE HR TEAM**, Canadian HR Reporter
-  2020, 2021, 2022, 2023 **SUPPORTINGLINES® HIGH-PERFORMANCE CULTURE AWARD**
-  2023 Waterstone Canada’s **MOST ADMIRED CORPORATE CULTURE**
-  2023 **CANADIAN COMPASSIONATE COMPANIES**
-  2023 Charity Village **BEST NON-PROFIT EMPLOYER**, Workplace Mental Health (20+ Staff)
-  2023 Charity Village **BEST INDIVIDUAL CONTRIBUTION TO WORKPLACE MENTAL HEALTH**, Catherine Gordon
-  2023 **CANADIAN WORKPLACE WELL-BEING AWARDS**, Presented By the Canadian Positive Psychology Association, The Canadian Life Assurance Company

Canuck Place Serious Illness Conversation Guide — Pediatrics[®]

Canuck Place has a mandate to share knowledge for the benefit of seriously-ill children everywhere. One of the ways Canuck Place fulfills this mandate is through the training and education of the Canuck Place Serious Illness Guide — Pediatrics[®] (SICG-Peds[®]). The guide is a tool to support health care providers in leading conversations to explore a family's understanding of their child's serious illness and their values, goals, priorities and preferences for care.

An important part of the SICG-Peds[®] program is the patient-family partner faculty who bring an essential lived-experience element to the training program.

Most recently, the Canuck Place team held training sessions for clinicians and trainers at McMaster Children's Hospital in Hamilton and supported one of the hospital's pediatric palliative care doctors to become a master trainer.

Canuck Place clinicians have also created a training guide specific for neonatal care.

"Serious illness conversations between clinicians and patients and families is already an international movement," says Camara van Breemen, Canuck Place Nurse Practitioner.

"We took the Ariadne Labs program and adapted it for pediatric and neonatal situations in line with evidence-based practice. Integrating values into advance care planning is essential, particularly for parents who have seriously-ill children."

Since 2018, over 900 clinicians globally have been through the SICG-Peds[®] training including over 150 clinicians in Southeast Asia including parts of India where the program has been translated into a local dialect.



Canuck Place nurse practitioner, Camara van Breemen with clinicians in India, providing hands-on mentorship and training on the SICG-Peds[®] in partnership with Two Worlds Cancer Collaboration



We share our gratitude
with you for joining our
goal to reach every
family caring for a child
with a serious illness in
BC and the Yukon.



Glenn, Cameron, and Sharon Bulger, Canuck Place Family

“In the hospital we were given the devastating news that our son Cameron’s cancer was terminal. It was at this time that we were introduced to Canuck Place. We knew that they existed, but we had no plans of ever engaging with any of their services. When our oncology team brought Canuck Place Nurse Practitioner, Camara van Breemen to us, she wasn’t met with a lot of warmth. You see, we knew that Cameron was terminal, but the idea of losing our son was so unfathomable that it couldn’t be possible. Camara was kind, persistent, and she really did know what she was talking about. She helped relieve Cameron’s pain and bring better quality to his life. She slowly transitioned from the person I wanted nothing to do with, to the person I couldn’t live without.”

—Sharon Bulger, Canuck Place Mom



44%

Fraser Health

20%

Vancouver Coastal
Health

12%

Vancouver Island Health

13%

Interior Health

9%

Northern Health

2%

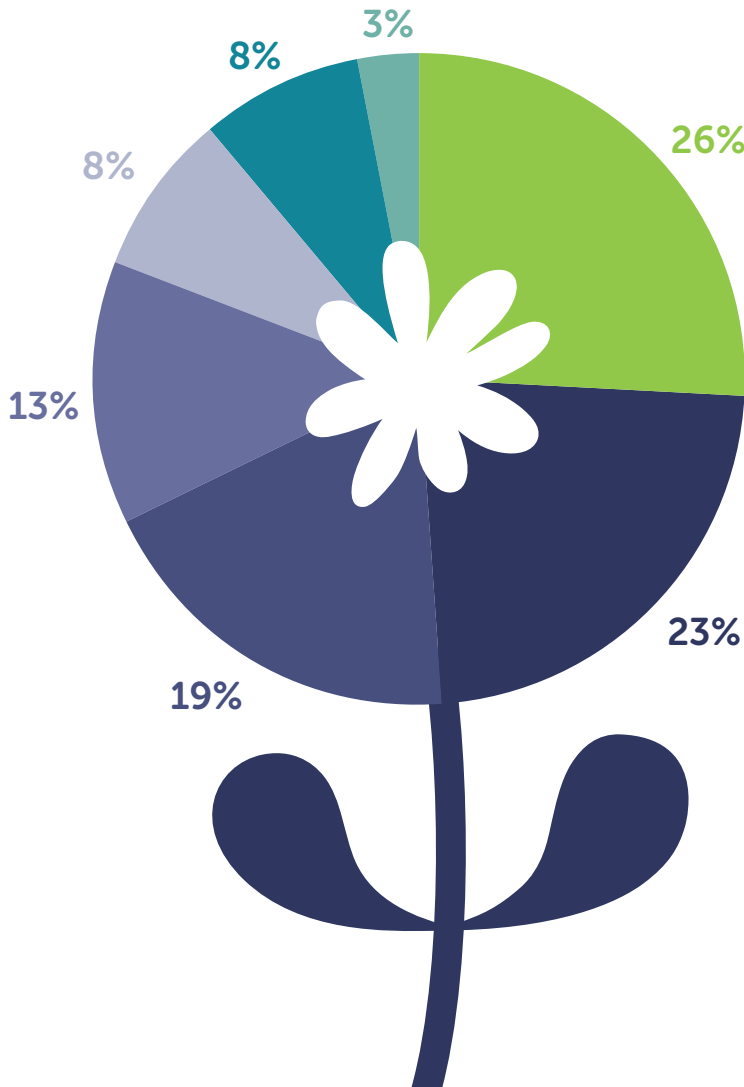
Yukon/Out of
Province

+61%

increase in children and
families on program over
the last decade

Canuck Place Specialized Care

Canuck Place clinicians care for over 240 different conditions and diseases.



**INCREASE IN THE
0-2 AGE CATEGORY
ON PROGRAM**



**OF CHILDREN ON PROGRAM
PRESENT WITH CANCER**

- Central Nervous System
- Congenital/
Chromosomal/
Multi-Organ
- Cancer
- Cardio Pulmonary
- Metabolic/
Biochemical
- Neuromuscular
- Immunological-
Infections

Growing Need for Bereavement Care

It is widely agreed that the death of a child is one of the most stressful, devastating events a family may experience.

Canuck Place Counsellor Mary Coleman conducted a bereavement report on the current state of bereavement services across British Columbia to identify gaps in services and opportunities for improving the bereavement care integration into the pediatric health system.

Bereavement care is provided in all Canuck Place locations, including both hospices, Dave Lede House in Abbotsford, Glen Brae in Vancouver, community-based care in-home, in-hospital and virtual.

There has been a significant increase in the demand for formal bereavement counselling at Canuck Place in the last five years.

The following gaps were identified by the study: care gaps for families who experience child loss across BC; unsustainable provincial bereavement model; and inequity in access for families needing care. Studies have demonstrated that specialized support for child loss is needed. Canuck Place clinicians are committed to expanding bereavement care to those families outside of our current reach. Thank you to our donors for supporting a family-centred, evidence-based, and sustainable bereavement model.

KEY FINDINGS: BEREAVEMENT REPORT



increase in the number of unique families receiving bereavement counselling sessions and a 50% increase in the number of counselling sessions per family



Both virtual (parents and siblings) and in-person support groups continue to be in high demand



Most families, many from rural communities across BC, have continued with virtual support groups far beyond healthcare mandates

People Are Our Most Valuable Resource

VOLUNTEERING IS A WORK OF HEART

In 2023-24, 330 Canuck Place volunteers generously contributed 12,040 hours. Your generosity helps sustain our volunteer program.

Volunteering at Canuck Place is more than just lending a helping hand; it's about becoming a source of strength, and a comforting presence in the lives of families navigating unimaginable challenges. Volunteers at Canuck Place come from all walks of life, bringing with them a diverse array of skills, experiences, and passions. Whether they're comforting a child with a bedtime story, playing games with children so exhausted parents get rest, or simply being a supportive presence, each volunteer plays a vital role in creating moments of joy and connection.

Bev McKenna, Canuck Place Volunteer



A LEGACY OF DEDICATION AND COMPASSION

Canuck Place staff and families celebrated the retirement of Registered Nurse, Doreen Landry, who spent 29 years caring for children and families on our program. Doreen was part of the staff that opened Canuck Place Vancouver – Glen Brae in 1995 and she was instrumental in leading the opening of Canuck Place Abbotsford – Dave Lede House. Doreen was known to families as a compassionate and caring nurse who held many children and families during difficult times. We are so grateful for Doreen's incredible legacy and we wish her all the best in a well-deserved retirement.

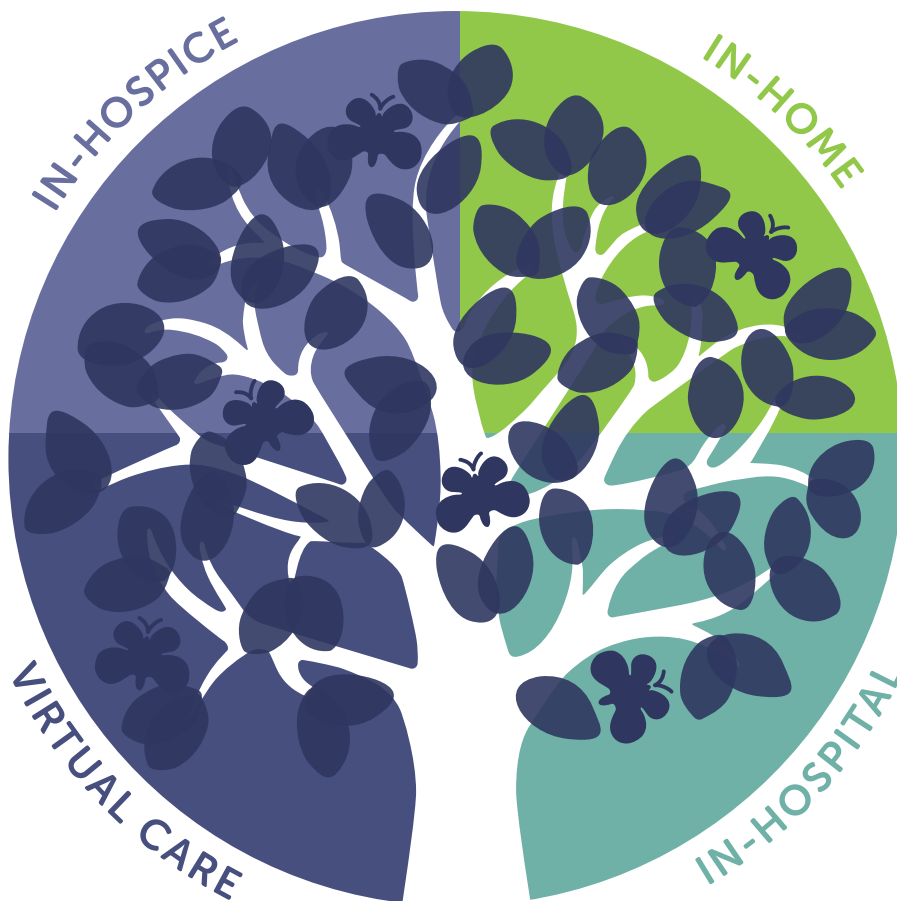
Doreen Landry, Canuck Place Registered Nurse



A Choice for the Place of Care

As many families face uncertainty with their child's serious illness diagnosis, they need choices. Canuck Place offers choice for place of care.

Canuck Place offers families community-based care in-home, in-hospital, virtually through the 24-Hour Clinical Care Line, and end-of-life care through the Enhanced Community Care Program.



Since 2018, there has been a 57% **INCREASE IN COMMUNITY CARE CONSULTS** across BC and the Yukon.



The lives of families
and children in need
are improved by
your investment
in their care.

Report from the Finance & Audit Committee



It is my pleasure to present the 2023-24 report from the Finance and Audit Committee for Canuck Place Children's Hospice (CPCH) Society.

This fiscal year reports a breakeven position for

CPCH, which would not have been possible without the very generous support of individual and corporate donors and government partners. CPCH increased fundraising by 4% and directly invested in providing care for our children and families. We also received additional operational funding of \$1.4 million from the Provincial Health Services Authority to continue to provide existing care programs and expand services to meet the increasing need for pediatric palliative care.

In British Columbia and globally, the economy has been challenging with high-inflation, increased interest rates and higher cost of living impacting the community supporting CPCH and our patient-family partners. The CPCH Senior Leadership Team and the Board of Directors are committed to strong stewardship of operations, accountability, and transparency with our donors in how funds are received,

spent and invested, to ensure optimization of our operating model and pursue additional fundraising opportunities. Net assets allow us to continue to provide these key services, and investments in the CPCH Foundation will be a bridge to any funding gaps and provide stability in economic uncertainty.

Deferred revenues will be designated for the organization's strategic plan through 2026 and include significant capital improvement projects at Canuck Place Vancouver - Glen Brae Manor, the implementation of an electronic medical record system, and continued clinical program growth. The deferred revenues are invested and provide investment income while we hold them for these vital designated projects.

In closing, we are committed to working in partnership with the Province of BC, our long-standing donors, and we welcome new community partners to build a sustainable future for CPCH and to be here for our children and families for many years to come.

A handwritten signature in black ink that reads "Tom Webster".

TOM WEBSTER
 Chair, Finance and Audit Committee
 Treasurer, CPCH Board of Directors

2023-24 Society — Statement of Financial Position

STATEMENT OF FINANCIAL POSITION	31 MAR 2024	31 MAR 2023
ASSETS		
Current assets	6,220,972	14,924,447
Investments	19,652,551	12,353,557
Capital assets	11,790,357	12,170,842
TOTAL ASSETS	\$ 37,663,880	\$ 39,448,846
LIABILITIES + NET ASSETS		
Current liabilities	1,901,420	2,033,246
Deferred contributions	9,924,549	11,121,809
Deferred capital contributions	8,620,730	9,076,610
Net assets	17,217,181	17,217,181
TOTAL LIABILITIES + NET ASSETS	\$ 37,663,880	\$ 39,448,846

STATEMENT OF FINANCIAL POSITION	31 MAR 2024	31 MAR 2023
REVENUE		
Donations and fundraising	10,031,417	9,673,604
Province of BC — Operating funding & one-time grants	8,840,394	8,210,222
Canuck Place Children's Hospice Foundation	2,260,000	1,665,000
Investment and other income	1,575,796	550,009
Amortization of deferred capital contributions	473,663	485,460
TOTAL REVENUE	\$ 23,181,270	\$ 20,584,295
EXPENSES		
Staffing costs	16,309,692	13,986,992
Development, communications and marketing	2,434,782	2,104,596
Clinical program	1,727,585	1,685,172
Central services	1,488,995	1,259,359
Amortization	637,917	619,607
Technology projects	374,216	255,180
Innovation, research and knowledge translation	208,083	112,099
TOTAL EXPENSES	23,181,270	20,023,005
EXCESS OF REVENUE OVER EXPENSES	\$ -	\$ 561,290

Please see our full audited Society financial statements on our website at canuckplace.org

Sources of Funding

Canuck Place care is supported by donors like you. Additionally, support is provided by key grants and committed funding:

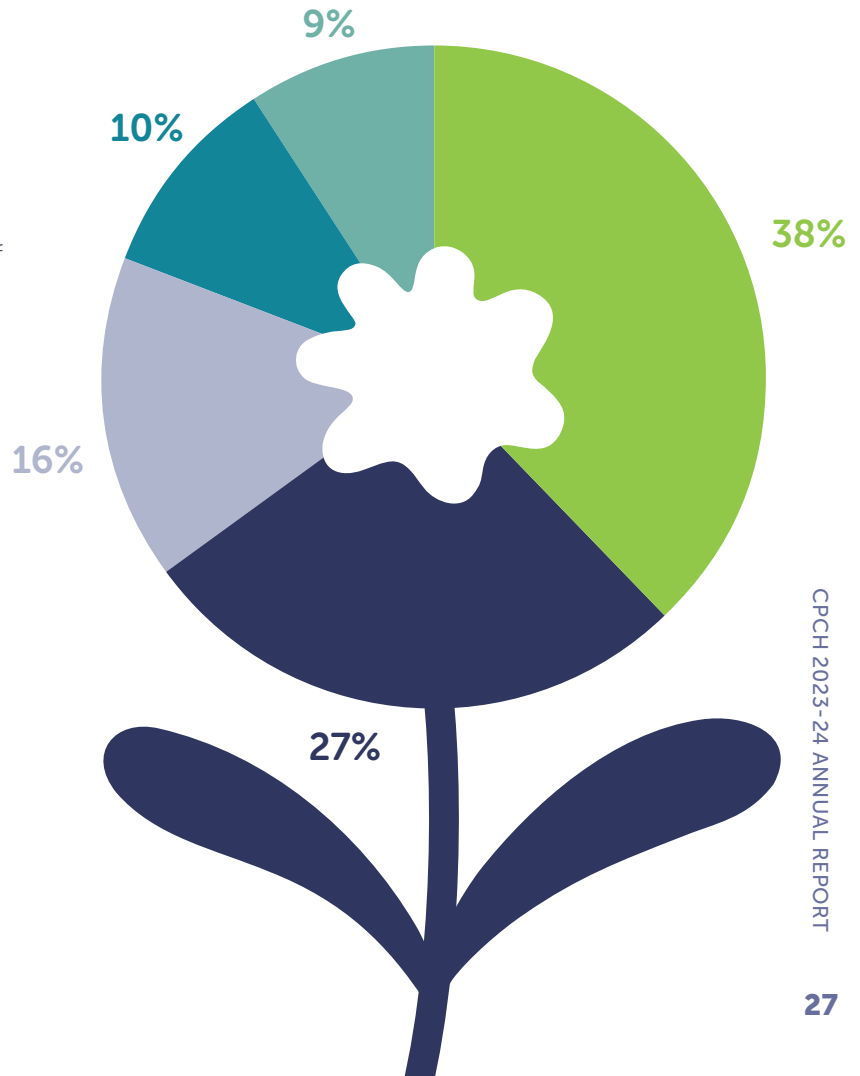


The Province of British Columbia, through the Ministry of Health partially supports direct patient care. Canuck Place raises 60% of the annual operating funds required to provide care. This important partnership is essential to the delivery of patient care.

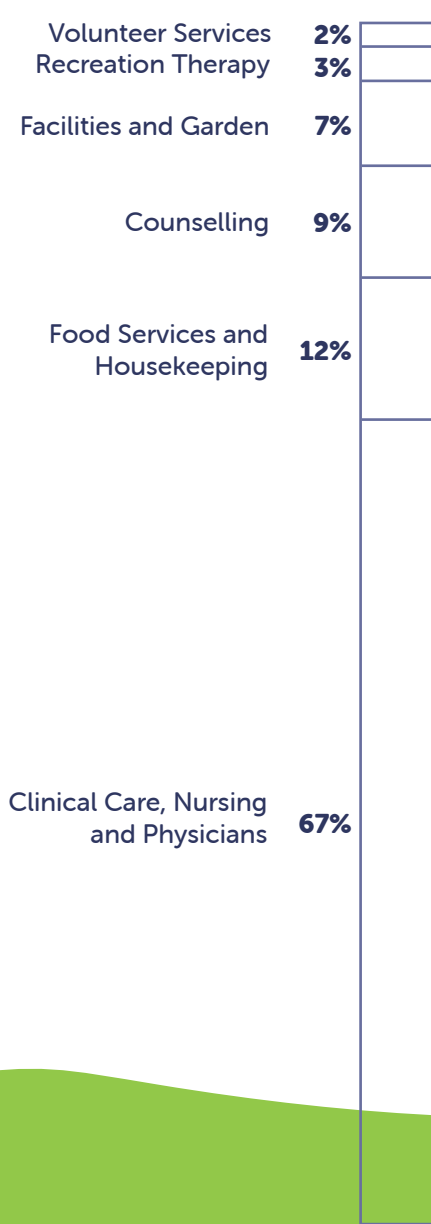


The Canucks for Kids Fund (CFKF) has granted vital funds for over 30 years. In addition to an annual grant, the CFKF provides hope, joy and inspiration through player and mascot Fin visits to families in our care, tickets to Abbotsford and Vancouver Canucks events for families, and volunteer hours from dedicated staff, Canucks Alumni and management. This grant provides 4% support for overall operating costs.

- Province of BC
- Individual, Corporate, and Community
- CPCH Foundation and Other Income
- Galas and Other Events
- Annual Giving



Investments in Care for Children and Families



The Work of Our Team Includes the Following

CLINICAL CARE, NURSING, & PHYSICIANS

- Clinical, nursing, and physician care
- Medical respite care
- Pain and symptom management
- Medicine, medical supplies, pediatric medical equipment
- Individualized family care plans
- Enhanced Community Care Program
- 24-Hour Clinical Care Line available province-wide

COUNSELLING

- Grief, loss, and bereavement counselling
- Spiritual care
- Social work
- School program
- Music and play therapy
- Virtual Care Technology

RECREATION THERAPY

- Full-time recreation therapy
- Exciting age-appropriate excursions for children on the program, bereaved families, and siblings
- Equipped and accessible vehicles to transport children in wheelchairs
- Excellent on-site play and recreation facilities
- Snoezelen multi-sensory room
- Virtual Care Technology

FOOD SERVICES & HOUSEKEEPING

- Provide healthy, nutritious meals twice a day, 365 days a year, and ensure dietary needs are met for children and families staying in-hospice
- Ensure the hygienic needs of children and families are met with infection control measures
- Provide additional comfort and support to family members throughout their stay

FACILITIES & GARDEN

- Provide a home-like comfortable environment tailored to the needs of the program
- Fully wheelchair accessible
- Maintenance of gardens to provide a peaceful place during times of upheaval and great uncertainty

VOLUNTEER SERVICES

Training, management, and support of the following volunteer roles:

- Family volunteer
- Garden volunteer
- Housekeeping volunteer
- Kitchen volunteer
- Maintenance volunteer
- Reception volunteer
- Special events volunteer
- Volunteer driver



With you, Canuck Place raises over 60% of the funds needed to provide care

Towards a Sustainable Future

The CPCH Foundation was established in 2000 to invest and safeguard funds for operating CPCH Society to ensure future generations of children living with complex conditions receive the pediatric palliative care they need. Investments in the Foundation will provide a bridge to any funding gaps and provide stability in the current economic uncertainty. All donations that come through the Foundation are used exclusively to support Canuck Place care. Annually, the Foundation makes financial contributions to the Society

for direct programs, emerging projects and supporting the financial sustainability from challenges caused by fluctuations in revenue and economic impacts. Additionally, the Foundation supports funding for necessary long-term maintenance and replacement of medical equipment and facilities. Within the Foundation, the Board of Directors and senior leadership review the funding needs of the Society and balances them with the investment imperatives of the Foundation annually.

INVESTMENT PRIORITIES



ROOM TO GROW

CPCH is investing in a major renovation to the Canuck Place Vancouver hospice to improve ventilation systems, structural repairs, improve accessibility and inclusivity and additional spaces for virtual care.



UNLOCKING THE FULL POTENTIAL OF PEDIATRIC PALLIATIVE CARE

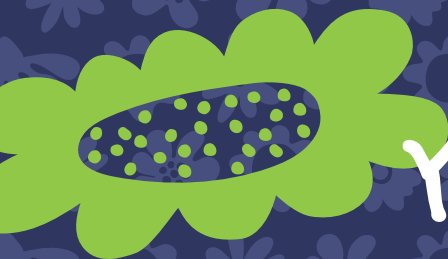
CPCH will continue to invest in: a provincial partnership to improve pediatric advance care planning; the CPCH RI; and knowledge and innovation tools like the Serious Illness Conversation Guide — Pediatrics®.



CARE FOR THE FUTURE

To improve patient safety and quality of care, CPCH is investing in an Electronic Medical Record to foster continuity of care.

Please see our full audited Foundation financial statements on our website at canuckplace.org.



Your generosity
helps ensure that
no family walks
this difficult journey
alone.

We Love How You Give



GENEROUS DONORS
providing support for care at
Canuck Place



**COURAGE BUILDER MONTHLY
DONOR PROGRAM**
Monthly Donors



GIFTS MADE TO PROVIDE CARE
for children and families
at Canuck Place



**GENEROUS
CORPORATE DONORS**



Top photo: Mireille Larosa, Canuck Place Connectors, Program Lead

Bottom photo: Amrit Maharaj, Canuck Place Connectors, Program Lead with Denise Prail, Canuck Place CEO

Canuck Place Connectors Supporting Heart-centred Care



Canuck Place Connectors are a group of community leaders representing the next generation of philanthropic visionaries dedicated to supporting Canuck Place.

Since 2023, this passionate group of Connectors has collectively donated and raised \$101,222, making a significant impact on Canuck Place care in just under a year

The Connectors program brings together individuals from diverse backgrounds who share core values of community, connection, philanthropy, and making a meaningful difference in the lives of children and families. Members pledge their support at the \$5,000+ level annually, whether through personal or business donations, or by fundraising their contributions.

Canuck Place Connector Lead, Mireille Larosa shares why this program is so near to her heart. **"In sharing my story and my passion for community-building, I want to show Connectors how they are helping create a life of brightness for every Canuck Place child and family. How their generosity can truly change the course of a life."**

Honouring Karim

In 2009, Farah and Eric's son Karim was diagnosed with neuroblastoma, a type of cancer that typically affects children younger than five. After multiple treatment attempts failed, Karim was referred to Canuck Place. Karim spent his last two months at Canuck Place, which quickly became a second home for the family, providing exceptional care and creating cherished memories despite Karim's severe illness. Canuck Place also supported the family after Karim's passing, for which they remain deeply grateful.

Farah and Eric, supported by their community, established an endowment fund in honour of Karim, "Karim's Cookie Fund" and have been supporting Canuck Place with kitchen upgrades for over ten years. Their ongoing support through fundraising and community involvement continues to make a significant impact on the families in Canuck Place care.

Karim, Canuck Place Child



Bob McCallum, Canuck Place Courage Builder Monthly Donor

Monthly Giving Makes a Major Impact

Robert "Bob" McCallum has been a dedicated monthly donor to Canuck Place since 2010. Despite moving to Portugal permanently in September of 2022, he has continued his unwavering support for our cause. Bob's commitment to hospice care began with his 13 years of volunteer work at Vernon, BC's North Okanagan Hospice. His firsthand experience there made him passionate about the positive impact hospice care has on both residents and their families. Inspired by Canuck Place's specialized care for children, Bob did not hesitate to start his monthly donations in 2010. His continued contributions have made a significant impact, helping Canuck Place provide critical care and support to children with life-threatening illnesses and their families. Bob's story exemplifies how personal experiences and dedication to a cause can transcend geographical boundaries, making a lasting difference in the lives of those in need.

Duncan Robinson's Legacy of Love and Support

Duncan Robinson's dedication to Canuck Place is deeply personal. Twenty-seven years ago his son, Michael, passed away at Canuck Place, which Duncan describes as a place of peace and serenity for families during challenging times.

His philanthropic journey goes back over two decades when he played a crucial role in bringing IGA's 'Share the Cupboard' program to Canuck Place. He also collaborated with Glen Ringdal to market and sell 'Canuck Corn,' a venture that raised nearly \$25,000 over seven years.

Duncan's legacy of generosity will continue through the Robinson Family Legacy Fund, ensuring that Canuck Place remains a haven for families in the future.

Duncan Robinson, Canuck Place Donor



Colin Glassco and Debbie Norman, Canuck Place Donors

Helping Families Create Memorable Experiences

Colin Glassco, and his foundation partner, Debbie Norman, are the driving forces behind The Glassco Foundation, which has been a steadfast supporter of Canuck Place since 2011. Their foundation has significantly contributed to the recreation therapy program, with a current five-year pledge of \$100,000 dedicated to supporting various recreational therapy adventures. Inspired by their previous work with Dreams Take Flight, Colin and Debbie understand the profound impact of providing children with exciting and joyful experiences. Their donations have facilitated numerous adventures and memory making for Canuck Place.



Lee and Debbie Bass, Canuck Place Donors

A Decade of Generosity

With the support of the Fraser Valley community and an incredible volunteer gala committee, Canuck Place proudly celebrated the 10th Anniversary of the Gift of Love Gala presented by MNP. The organization has been the gala's presenting sponsor for the last nine years and Canuck Place is deeply grateful for their generosity and dedication in helping raise over \$4 million to support children with life-threatening illnesses and their families.

"MNP's core value of making a difference and giving back are steadfast. Our support of Canuck Place is about our collective human desire and passion to support our neighbours—particularly with an organization that cares for the most vulnerable children and families," says Lee Bass, MNP Regional Managing Partner, Fraser Valley.

Bringing Experiences to Life

Patrick Roberge Productions (PRP) has partnered with Canuck Place to produce Gift of Love since 2015. With their vision, creativity and production talents they bring the show to life and establishing a memorable event in the Fraser Valley. **"Being a part of the Gift of Love Gala for the last 10 years has been an incredible journey for us. It has allowed us to witness firsthand the community's unwavering support and the positive impact of collective efforts,"** says Patrick Roberge, President & Creative Director of PRP. **"Each year, we are moved by the stories of resilience and hope shared by the families, reaffirming our commitment to Canuck Place. Our entire PRP team is extremely proud of our association with the incredible people that make Canuck Place possible."**

Peggy Peat School of Dance performing at the Gift of Love Gala



Love is a Gift

The 10th Annual Gift of Love Gala Presented by MNP was a memorable evening thanks to the dedication of gala co-chairs Suzanne Adams, Denise de Jonge, and Aprille Ferrario. They expertly led a passionate and committed volunteer committee to achieve an incredible year of fundraising and marking a significant 10-year milestone for both the event and the opening of Canuck Place Abbotsford — Dave Lede House.

“Giving of myself to Canuck Place has truly enriched my life. It is incredibly rewarding. It has taught me incredible gratitude and a greater appreciation for the smallest moments and time I have with my family,” says Suzanne.

Canuck Place is grateful for the energy, leadership, and time Suzanne, Denise, and Aprille have put into volunteering for the gala. This power trio inspires a loving community. Thank you for your commitment to Canuck Place children and families in the Fraser Valley and across the province.

Suzanne Adams, Aprille Ferrario, and Denise de Jonge,
Gift of Love Co-Chairs



Riaz Meghji, Gift of Love Emcee

The Heart of Connection

Riaz Meghji is an incredible human and communicator. Author of *Every Conversation Counts*, Riaz helped Canuck Place celebrate a special 10th Anniversary of the Gift of Love Gala. It was also an anniversary celebration for Riaz; he has dedicated 10 years of his time as our fabulous emcee.

“Canuck Place is a shining example of what meaningful human connection is all about. Every person I’ve met who supports this mission is driven by passion and purpose. We are all better off because of communities like this one and I’m proud to support every year. Canuck Place has taught me about learning how to hold space of others during sensitive times, how to be empathetic and show up for others, and having the courage to ask for help and the humility to receive it,” says Riaz.

Time is a Gift

The 19th annual Gift of Time Gala presented by Nicola Wealth, raised over \$1.55 million to support Canuck Place care. Gala co-chairs, Lucy Greer, Robyn Lalani, and Michelle Porter provided exceptional leadership to an enthusiastic and committed volunteer committee.

“Giving to Canuck Place has been profoundly important to me. Being part of the Gift of Time Gala committee has deepened my understanding of Canuck Place’s vital role throughout our province,” says Michelle. **“I will forever be inspired by the strength, courage, resilience, and love of Canuck Place families, and the unwavering, compassionate support from the Canuck Place team.”**

The funds raised at the gala support care for families like Marie and Wes Toews, who shared their Canuck Place experience and their daughter Sophia with over 500 guests.

“Canuck Place helped us be parents, soaking in every precious moment making memories. They were there every step of the way, proving with us that a short life lived with love is not a wasted one,” says Marie.

This year’s Gift of Time Gala presented by Nicola Wealth saw an exciting collaboration with BC artist, Gabryel Harrison. Her painting *Spring is Constant* was the inspiration behind the event’s design. Global BC’s Sonia Sunger emceed, and Fred Lee led a lively auction and Fund-a-Need drive. Canuck Place is so grateful to the gala co-chairs and committee, sponsors, volunteers, and everyone who dedicated their time to make this event a success.

Michelle Porter, Robyn Lalani, and Lucy Greer, Gift of Time Co-Chairs



Transforming Lives Through Music Therapy

The Music Heals Charitable Foundation has been a steadfast supporter of the music therapy program at Canuck Place for over a decade and instrumental in expanding the therapeutic use of music for children and families in home, in hospice, and within the community. **“Like Canuck Place, Music Heals believes in celebrating moments,”** says David Barnett, Music Heals Board President. **“We know how powerful moments with music can be for kids and families, particularly when facing challenges. We are inspired by Canuck Place’s innovative approach to care, which includes support for the whole family.”**

At their core, Music Heals is dedicated to giving the gift of music to the families at Canuck Place through continued funding and support for music therapy.

Karin Roberts, Canuck Place Music Therapist, Owen Hill-Davie Canuck Place Child



Matilda Williams-Obiajunwa, Canuck Place Development Coordinator, WICK-ED Golf Tournament organizers, and Tracie Seeley, Canuck Place Community Partnership Officer

WICK-ED Golf Tournament Tees Up for Canuck Place

WICK-ED (Water-Waste Industry Cares for Kids – Every Day) Golf Tournament has supported Canuck Place since 2003, contributing over \$200,000. The tournament was revamped in 2018 from the original Association of Professional Engineers and Geoscientists of BC golf event, offering industry professionals a meaningful way to give back to the community.

The inspiration behind WICK-ED Golf Tournament’s dedication stems from a personal experience of one of the organizers, who witnessed firsthand the challenges that parents face when their children require medical care. This experience fueled a desire to support families coping with serious health issues, driving the mission of the WICK-ED Golf Tournament to make a positive impact.



Inland Kenworth team working in the Canuck Place gardens

Driving Significant Funds

The Inland Kenworth team has not only dedicated their time to Canuck Place, but has also raised \$95,000 for seriously-ill children through charity trucking auctions over the last two years.

Their team is drawn to Canuck Place for both the specialized, interdisciplinary care we provide for children and families, as well as the extensive impact Canuck Place has across communities in British Columbia. They recognize that if a team member hasn't relied on Canuck Place services, it is likely they're connected to someone who has. The Inland team is deeply grateful for the opportunity to support Canuck Place and help us reach our goal to provide pediatric palliative care to every child that needs it throughout the province.

Inspiring Generosity

For over two years, Inspire Dental Group has supported Canuck Place. Through cause-marketing initiatives and personal team donations, they have generously gifted \$40,000, helping children with life-threatening illnesses and their families who love them.

Inspire Dental Group has always believed wholeheartedly in giving back to their community. They are grateful to be able to contribute and ensure families receive access to the best care and support as they experience some of the most difficult moments of and the families who love them.

Encouraged by Canuck Place's dedication to providing high-quality and compassionate care to families throughout their entire journey, Inspire Dental Group feels compelled to support an organization like Canuck Place that share similar values and believes in making a difference in people's lives.

Thanks to donors like Inspire Dental Group, we can continue to walk alongside families during unimaginable times.

The team at Inspire Dental Group



CANUCK PLACE SOCIETY BOARD OF DIRECTORS

Suzanne Steenburgh
(Chair)

Robert Coard (Vice Chair)

Teresa Budd (2nd Vice
Chair and Secretary)

Tom Webster (Treasurer)

Barbra Mohan (FAC
Liaison)

Barry Macdonald

Bob Smart

Jill Donaldson

John DeLucchi

Markus T. Delves

Dr. Matthew Chow

Tom Wong

CANUCK PLACE FOUNDATION

Suzanne Steenburgh
(Chair)

Robert Coard (Vice Chair)

Teresa Budd (Secretary)

Tom Webster (Treasurer)

Bob Smart
(Director at Large)

Markus T. Delves
(Director at Large)

Our Dedication to Integrity, Honesty, and Respect

As a globally-recognized organization, Canuck Place Children's Hospice is committed to sound leadership and governance. Our volunteer Board of Directors are dedicated to our vision:

All newborns, children, youth, and their families living with progressive, life-threatening conditions will benefit from our compassion, knowledge, and holistic clinical practices in pediatric palliative care.

We want every interaction you have with us—whether that is in person, by telephone, email, letter, or via social media, to be a positive experience, but we know we won't always get it right—if this is the case, please let us know.

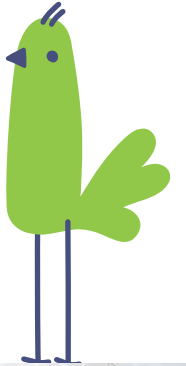
We take complaints seriously and welcome compliments and feedback so we can continuously grow and learn and improve from them.


Get in contact with us at:

hello@canuckplace.org and let us know how we are doing.







The image features a decorative border of dark blue flowers and green birds. The flowers are stylized with various petal shapes and centers, some containing white dots or circles. The birds are simple, rounded green shapes with small beaks and legs. The background is white, and the text is written in a green, cursive font.

There is only today
and the moment you
are in. Live it well
with a loving heart.

AT CANUCK PLACE WE UNDERSTAND THAT UNIQUENESS IS POWERFUL.

We hold each other accountable for an inclusive environment where **employees feel empowered to share their experiences and ideas and know that they belong.** We believe diversity drives innovation and the best pediatric palliative care for children and their families therefore we welcome that **every person brings an individual perspective and experience to advance our mission.** At Canuck Place, we have more work to do to advance diversity and inclusion and we are building a culture where difference is valued. We have a commitment to inclusion across gender identity or expression, sexual orientation, religion, ethnicity, age, neurodiversity and disability status, **to ensure our team members are empowered to bring their full, authentic selves to work.**



We are
grateful
for you

canuckplace.org

Canuck Place Children's Hospice is a non-profit organization registered in Canada under the number 13386 7523 RR0001.
For more information on our privacy policy, visit canuckplace.org/privacy

Canuck Place is grateful to partner with BP Media for this print publication—thank you for your dedication and generosity.

